

CRESSWELL
RESIDENCES

OVERVIEW

05	DUBAI	29	DESIGN
11	DUBAI SOUTH	35	AMENITIES
19	CRESSWELL RESIDENCES	45	INTERIOR SPECIFICATIONS
25	PROJECT DETAILS	55	FLOOR PLANS
		67	DEVELOPER



DUBAI



A CITY OF SUPERLATIVES

Welcome to Dubai, a city that defies expectations and embraces the extraordinary. From the Burj Khalifa to the Palm Jumeirah, Dubai is known for breaking records and setting new benchmarks.



WHY INVEST IN DUBAI

Dubai has established itself as a leading investor hub. Renowned for its iconic skyline studded with spectacular skyscrapers, cosmopolitan lifestyle and state-of-the-art infrastructure, Dubai has become a coveted destination for investors globally. World-class dining options, stunning beaches, connectivity, cutting-edge entertainment, and leisure facilities are only a few of the reasons why this city has become a global cynosure. Dubai is positioned for phenomenal growth and development, so you can count on your investment to flourish.

UAE Golden Visa
Tax-free Income
Infrastructure
Investor-friendly Policies
Connectivity
High Standard of Living
Development & Innovation
Safety





DUBAI SOUTH

AN EXTRAORDINARY RESIDENTIAL ENCLAVE DESIGNED TO REDEFINE MODERN LIVING.

Nestled within the dynamic and evolving Dubai South community, this Cresswell Residences offers a unique blend of contemporary luxury and urban convenience. Discover your new home in this thriving and vibrant neighborhood.

A WORLD OF POSSIBILITIES

Dubai South is a masterfully planned community that seamlessly integrates modern living with unmatched convenience. This dynamic neighborhood boasts a range of amenities and recreational opportunities, making it the ideal place to call home.

- Parks and Green Open Spaces*
- Shopping and Dining Outlets*
- World-Class Education*
- Advanced Healthcare*
- Golf City*





LOCATION

NATURE AT YOUR DOORSTEP, CITY WITHIN REACH

Cresswell Residences is strategically located in Dubai South, providing easy access to major roadways like Al Khail Road and Emirates Road. You're just a short drive away from Dubai's bustling city center, making it easy to explore all that this dynamic city has to offer.

Cresswell Residences provides easy access to everything you need. Whether it's shopping, dining, or entertainment, you'll find it all just a stone's throw away.

7 Min
Al Maktoum Airport

13 Min
Expo City Dubai

20 Min
The Outlet Village

20 Min
Palm Jebel Ali

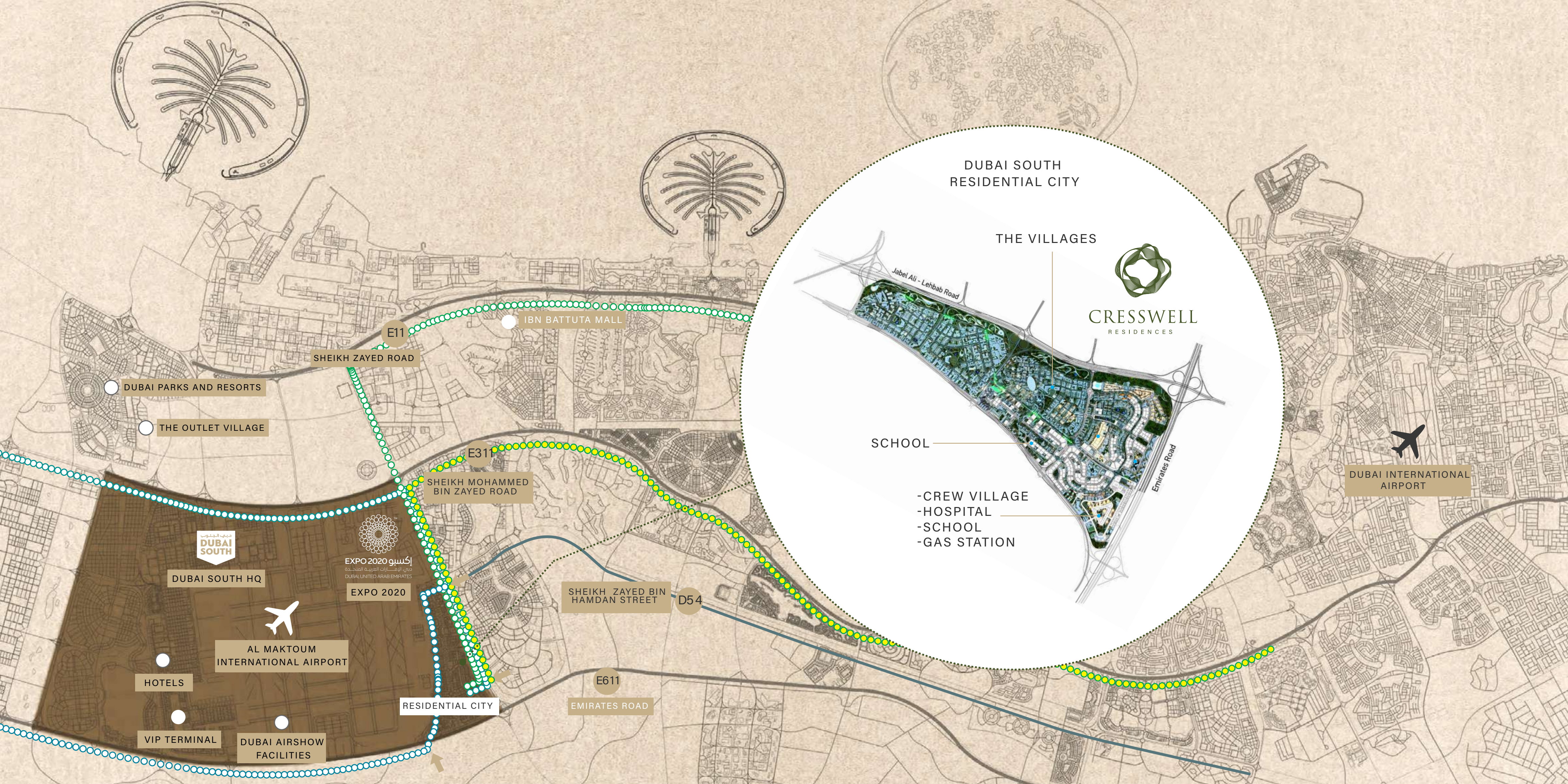
20 Min
Dubai Parks & Resorts

30 Min
Dubai Marina

40 Min
Downtown

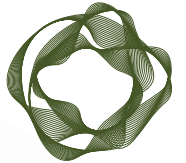
40 Min
DXB





DUBAI SOUTH
RESIDENTIAL CITY

THE VILLAGES



CRESSWELL
RESIDENCES

SCHOOL

- CREW VILLAGE
- HOSPITAL
- SCHOOL
- GAS STATION

DUBAI INTERNATIONAL
AIRPORT

SHEIKH ZAYED ROAD

IBN BATTUTA MALL

E11

DUBAI PARKS AND RESORTS

THE OUTLET VILLAGE

E31

SHEIKH MOHAMMED
BIN ZAYED ROAD

دبي الجنوب
DUBAI SOUTH

DUBAI SOUTH HQ

إكسبو 2020
EXPO 2020
دولة الإمارات العربية المتحدة
DUBAI UNITED ARAB EMIRATES



AL MAKTOUM
INTERNATIONAL AIRPORT

HOTELS

VIP TERMINAL

DUBAI AIRSHOW
FACILITIES

RESIDENTIAL CITY

SHEIKH ZAYED BIN
HAMDAN STREET

D54

E611

EMIRATES ROAD



WELCOME TO
CRESSWELL RESIDENCES



A SERENE OASIS IN THE HEART OF DUBAI SOUTH

Cresswell Residences is where the tranquility of nature meets the vibrancy of urban living. Your home here is designed to be your sanctuary, a place where you can truly be yourself and find peace amidst the bustling city.





WHERE HAPPINESS FINDS A HOME

Cresswell Residences offers homes that are thoughtfully designed to provide you and your family with a haven of peace and joy. Experience spacious open floor plans, elegant finishes, and a welcoming ambience that creates an urban oasis.



The background is a solid, warm-toned surface with a fine, woven texture. On the left side, there is a complex, overlapping pattern of thin, white, wavy lines that create a sense of depth and movement. These lines form a series of interconnected loops and curves, resembling a stylized, abstract landscape or a complex geometric design. The overall composition is minimalist and elegant, with a focus on texture and form.

PROJECT DETAILS

PROJECT DETAILS

PROJECT NAME

CRESSWELL RESIDENCES

PROJECT TYPE

APARTMENTS

LOCATION

DUBAI SOUTH, UAE

TOTAL UNITS

72 UNITS

UNIT MIX:

- 24 - 1 BEDS
- 36 - 2 BEDS
- 12 - 3 BEDS

OWNERSHIP

FREEHOLD

HANDOVER

Q4 2025





DESIGNED TO DELIGHT

ELEGANCE IN EVERY DETAIL

Each home at Cresswell Residences reflects refinement. Contemporary design, abundant natural light, and a harmonious color palette create a living space that is both stylish and comfortable.





TIMELESS AESTHETICS

Discover a sense of exuberance and calmness in the aesthetics of Cresswell Residences. Inspired by nature, our apartments are filled with light, life, and energy. Clean lines and refined angles provide a sophisticated elegance that defines our space.





AMENITIES



SOMETHING FOR EVERYONE


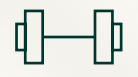




At Cresswell Residences, there's something for every member of your family. Golf courses, malls, parks, schools, and colleges are all within reach, ensuring a wholesome living experience for everyone.





ELEVATE YOUR LIFESTYLE

Cresswell Residences offers a wide range of amenities to enhance your quality of life. From lush green gardens to world-class fitness facilities, our community is designed to provide endless enjoyment.

	Swimming Pool
	Gym
	Reception Area
	Steam/Sauna
	Roof Garden
	Kids Play Area





The background of the page is a warm, golden-brown color. On the left side, there are several thin, white, wavy lines that flow from the top left towards the bottom right, creating a sense of movement and depth. On the right side, there is a subtle, low-angle photograph of a desert landscape with rolling sand dunes under a clear sky.

INTERIOR SPECIFICATIONS









The background is a warm, golden-brown gradient. It is filled with numerous out-of-focus circular light spots, known as bokeh, which vary in size and brightness. On the left side, there are several thin, white, wavy lines that flow and curve across the frame, creating a sense of movement and depth. The overall aesthetic is elegant and modern.

FLOOR PLANS



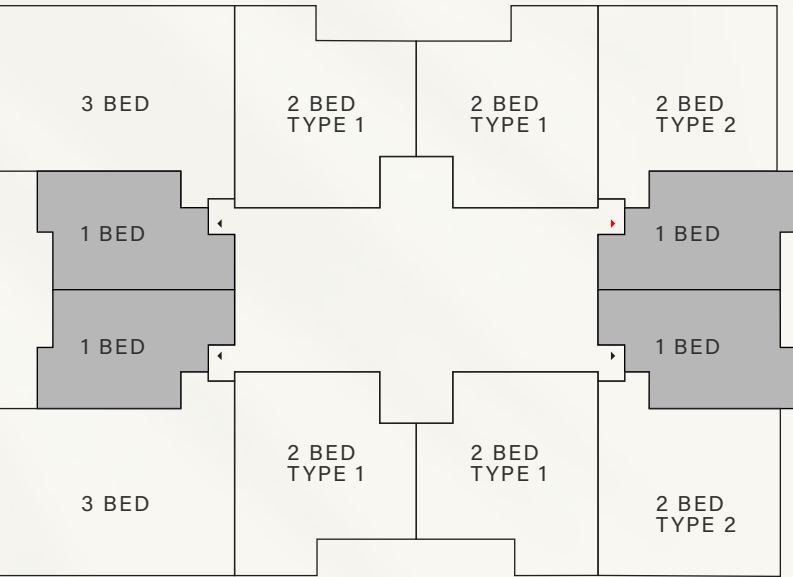
IMAGINE. EXPLORE. EXPERIENCE.

Here, you, and your family will enjoy a lifestyle filled with memorable moments. With parks and gardens, world-class fitness facilities, and endless entertainment options, you'll make the most of community living.



1 BEDROOM APARTMENT

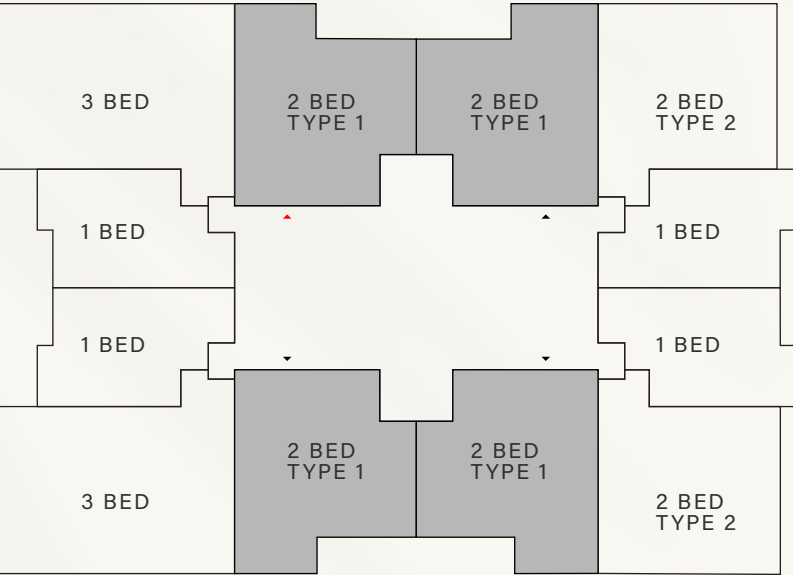
SUITE AREA	802.56 SQ.FT.	74.56 SQ.M.
BALCONY AREA	100.86 SQ.FT.	9.37 SQ.M.
<hr/>		
TOTAL AREA	903.42 SQ.FT.	83.93 SQ.M.



TYPE 1

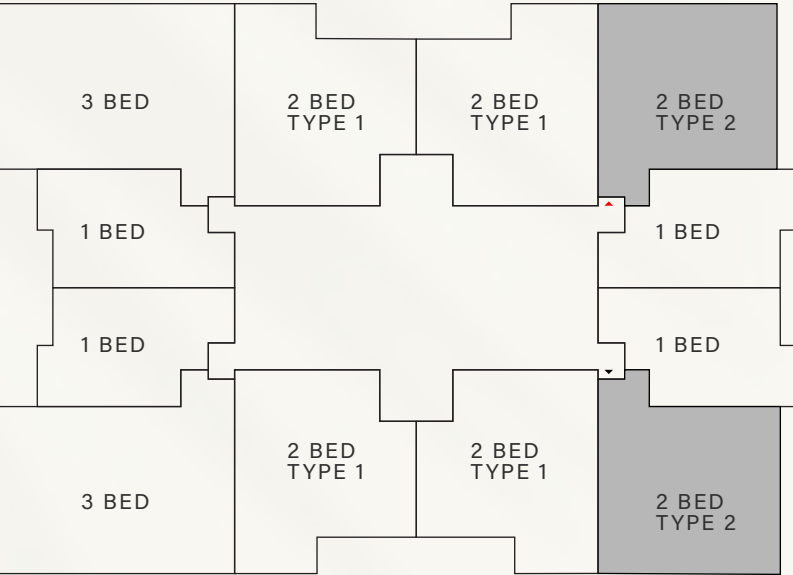
2 BEDROOM APARTMENT

SUITE AREA	1245.92 SQ.FT.	115.75 SQ.M.
BALCONY AREA	185.68 SQ.FT.	17.25 SQ.M.
<hr/>		
TOTAL AREA	1431.60 SQ.FT.	133 SQ.M.



TYPE 2
2 BEDROOM APARTMENT

SUITE AREA	1297.91 SQ.FT.	120.58 SQ.M.
BALCONY AREA	135.09 SQ.FT.	12.55 SQ.M.
<hr/>		
TOTAL AREA	1433 SQ.FT.	133.13 SQ.M.

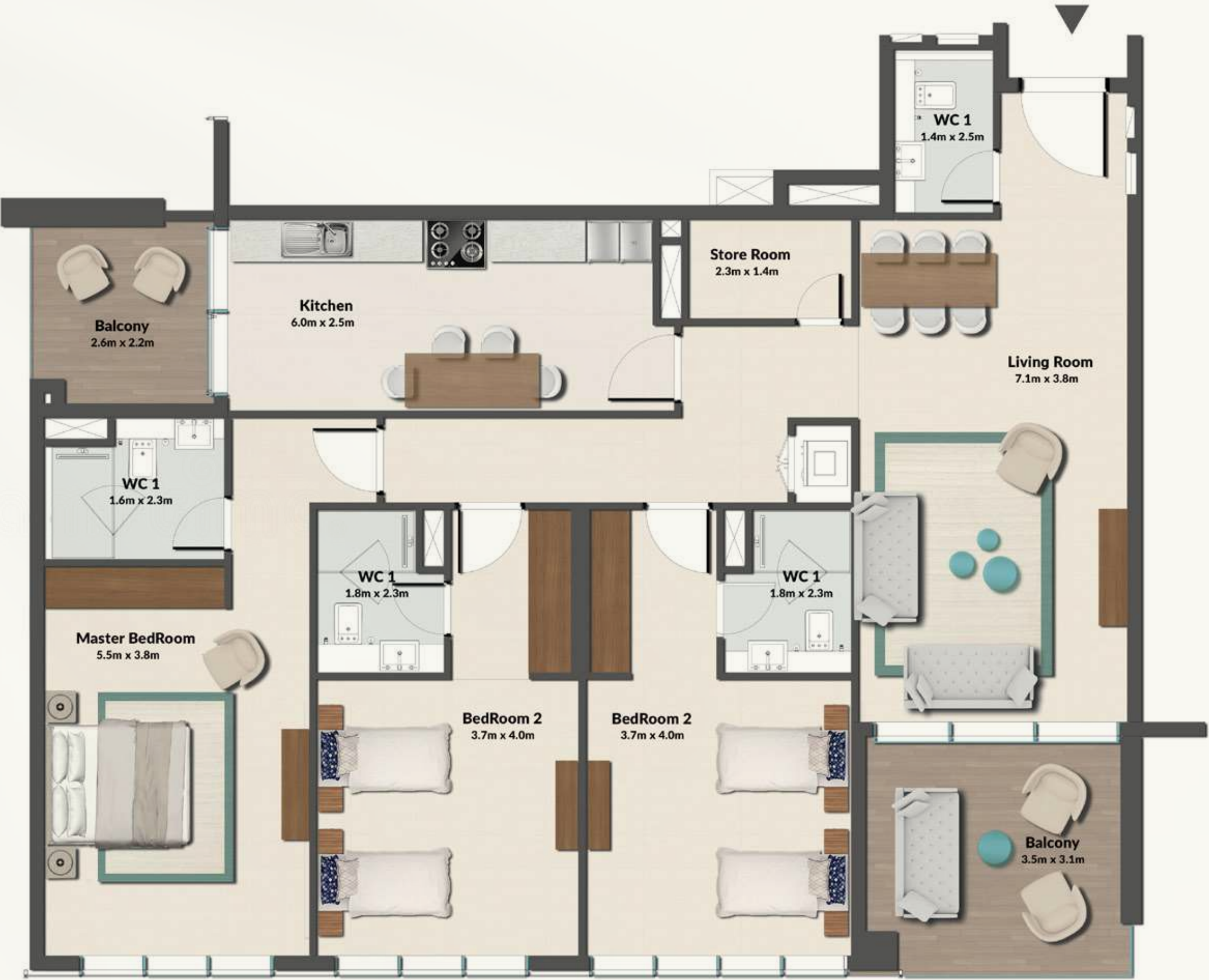
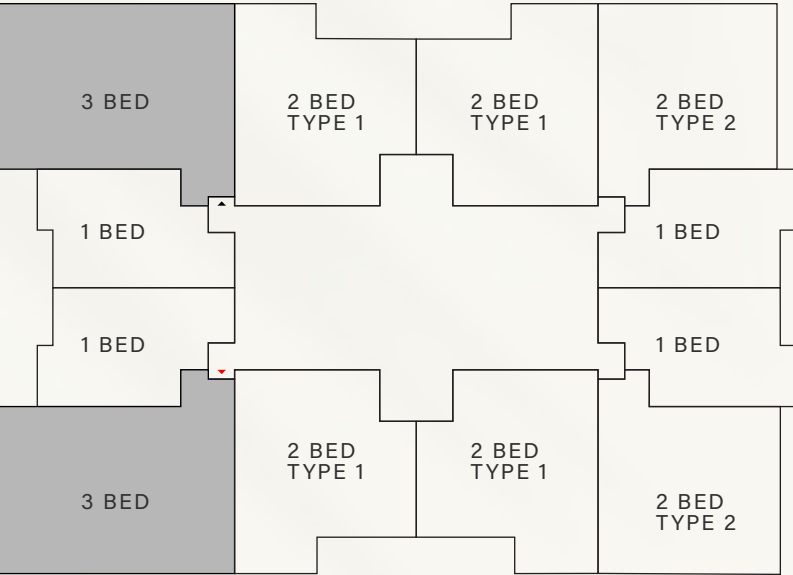


dream



3 BEDROOM APARTMENT

SUITE AREA	1640.74 SQ.FT.	152.43 SQ.M.
BALCONY AREA	211.08 SQ.FT.	19.61 SQ.M.
<hr/>		
TOTAL AREA	1851.82 SQ.FT.	172.04 SQ.M.





THE DEVELOPER

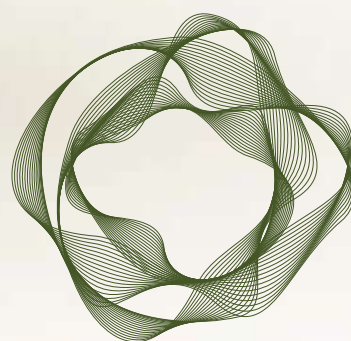


After 15 years of delivering over 3,000 units and more than 25 projects across the GCC; experience was gained, mistakes were realized, and opportunities became clear. This led to the birth of a real estate project management company by the name of Esnad Management.

The experienced management team specialized in real estate projects is dedicated to guiding its clients to the success of their projects through the Projects Consultation services and oversee the continuous prosperity of the project through the Property Management and Facility Management services, becoming a powerhouse in GCC Real Estate Project Management, in association with AF Properties.

esnadmanagement.com





CRESSWELL
RESIDENCES